

CATASTO DEI BOSCHI E DEI PASCOLI
PERCORSI DAL FUOCO
(L. 353/2000 e L.R. 39/2000)

Tavola Sud








ANNO 2022

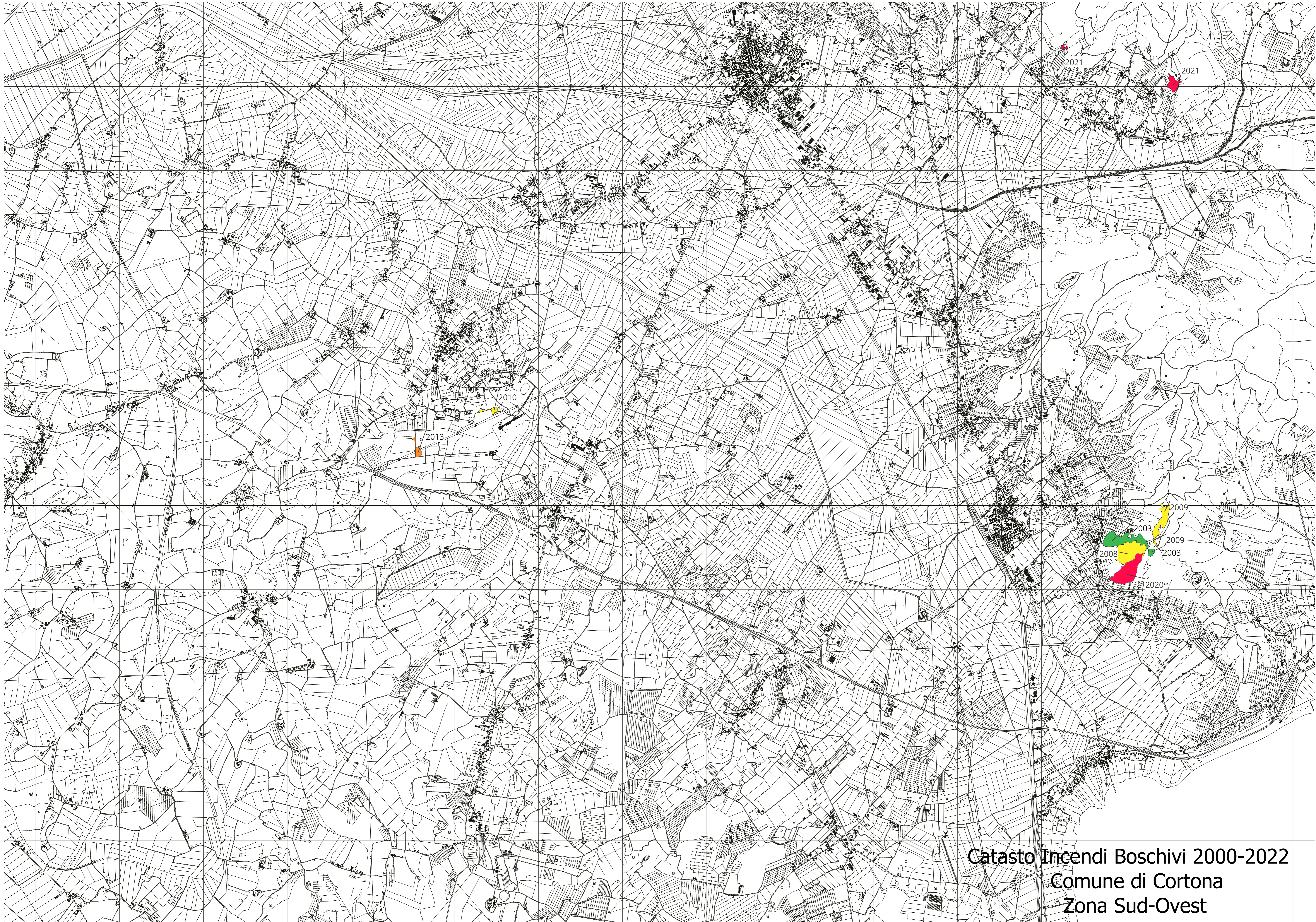
Censimento aree interessate da incendi boschivi fino all'anno 2021

Cortona, Maggio 2022

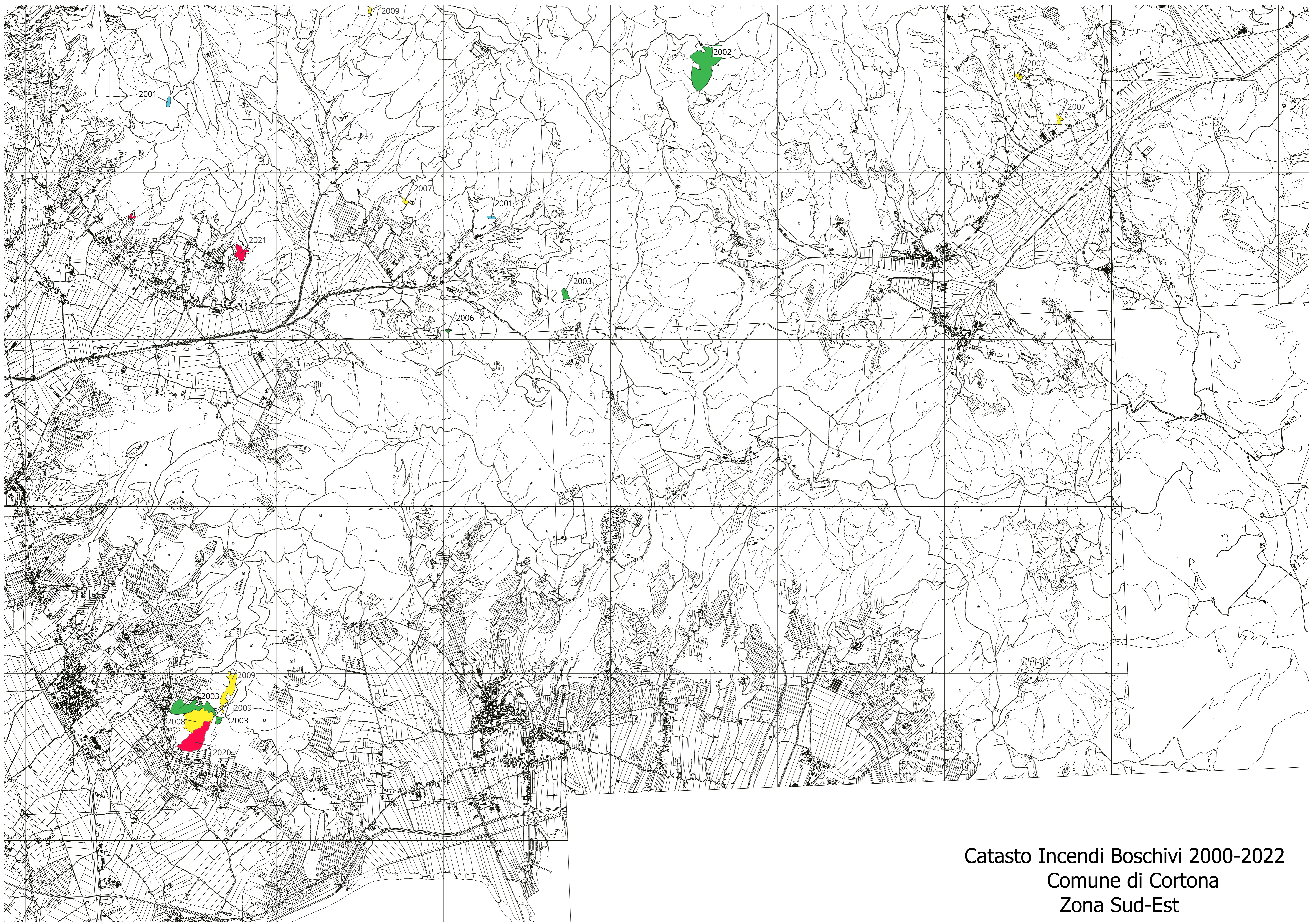
Il dirigente
Ing. Marica Bruni

Legenda:

-  Aree incendiate anni 2000-2001
-  Aree incendiate anni 2002-2006
-  Aree incendiate anni 2007-2011
-  Aree incendiate anni 2012-2016
-  Aree incendiate anni 2017-2021



Catasto Incendi Boschivi 2000-2022
Comune di Cortona
Zona Sud-Ovest



Catasto Incendi Boschivi 2000-2022
Comune di Cortona
Zona Sud-Est